

# CROP MONITORING REPORT

Cropping Services Ltd

Client: **Hira Bhana & Co Ltd**

Monitoring date: **2019-04-30**

Scout: **Olivia Prouse**

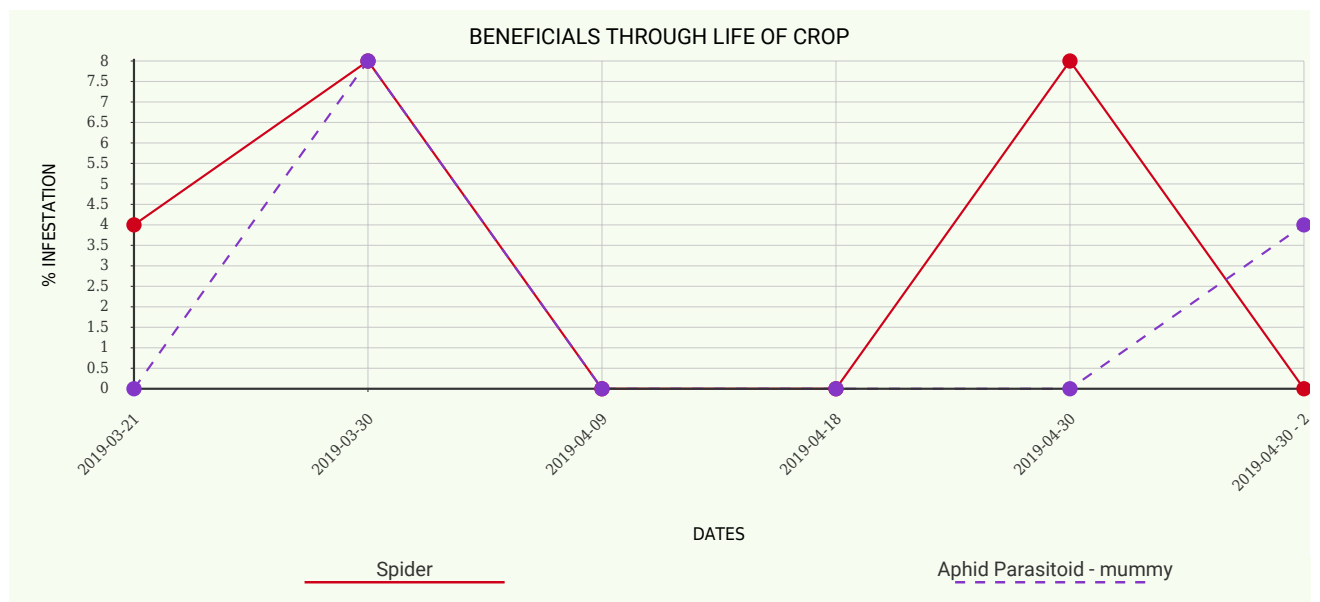
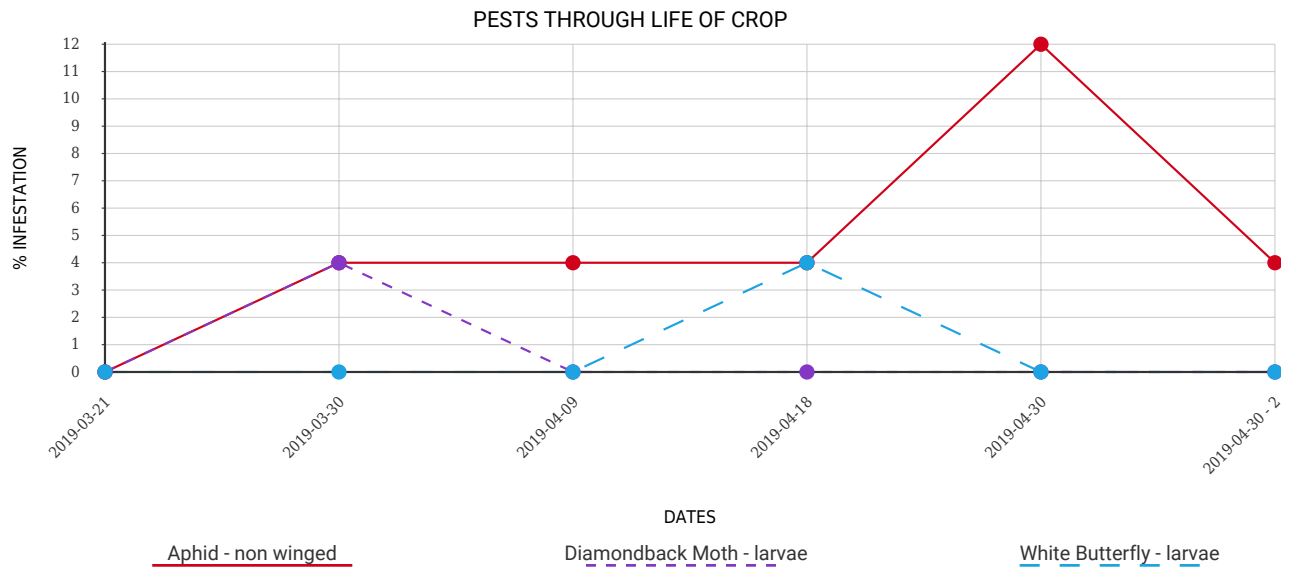
Property: **Friedlanders Rd Block**

Block: **FRI 1**

	Category	Observation	Total Sample Size	Total Monitoring Result	Plant # Affected	% Infestation	Triggered Thresholds
Crop: <b>Brassicas</b>	Pest	Aphid - non winged	25	1	1	4	
	Beneficial	Aphid Parasitoid - mummy	25	1	1	4	
Growth stage: <b>Head Formation</b>							
Sample size: <b>1</b>							
Weather: <b>Sunny</b>							
Note: Unusual mottled leaves in the cauliflower. Unsure of cause. See attached photos.							

## Images:





This disclaimer governs the use of this report. By using this report, you accept this disclaimer in full. This disclaimer was created using an SEQ Legal template. To the maximum extent permitted by applicable law we exclude all representations, warranties, undertakings and guarantees relating to the report. Without prejudice to the generality of the foregoing paragraph, we do not represent, warrant, undertake or guarantee that the information in the report is correct, accurate, complete or non-misleading. The limitations and exclusions of liability set out in this section and elsewhere in this disclaimer: govern all liabilities arising under the disclaimer or in relation to the report, including liabilities arising in contract, in tort (including negligence) and for breach of statutory duty. We will not be liable to you in respect of any losses arising out of any event or events beyond our reasonable control. We will not be liable to you in respect of any business losses, including without limitation loss of or damage to profits, income, revenue, use, production, anticipated savings, business, contracts, commercial opportunities or goodwill. We will not be liable to you in respect of any loss or corruption of any data, database or software. We will not be liable to you in respect of any special, indirect or consequential loss or damage. If a section of this disclaimer is determined by any court or other competent authority to be unlawful and/or unenforceable, the other sections of this disclaimer continue in effect. If any unlawful and/or unenforceable section would be lawful or enforceable if part of it were deleted, that part will be deemed to be deleted, and the rest of the section will continue in effect.